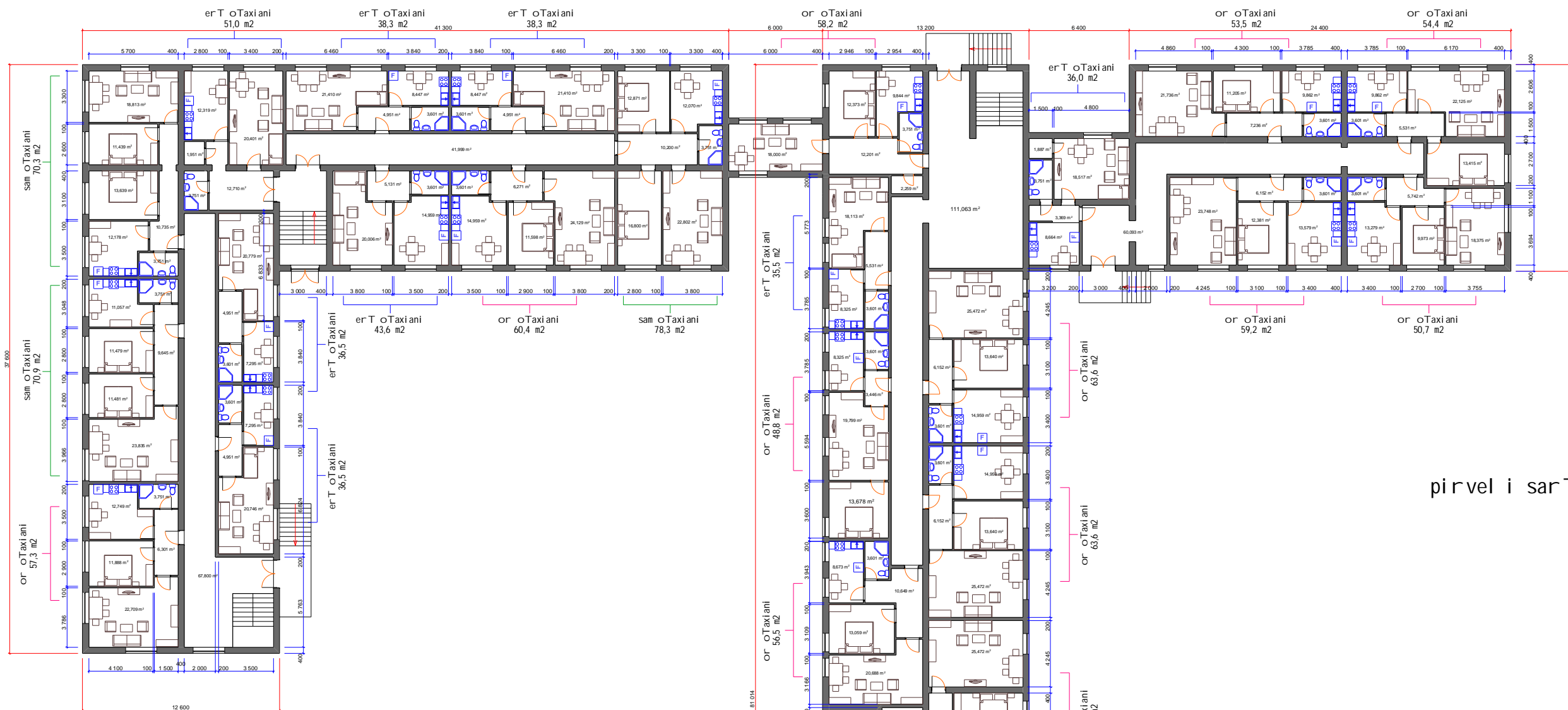


q. xaSuri, saakaZis quCa #2 mdebare
(yofil i saavadmyofo) 3 sarTul iani Senobis
rekonstruqcia sacxovrebel korpusad

eskizuri proeqti

„b.d. j gufi „

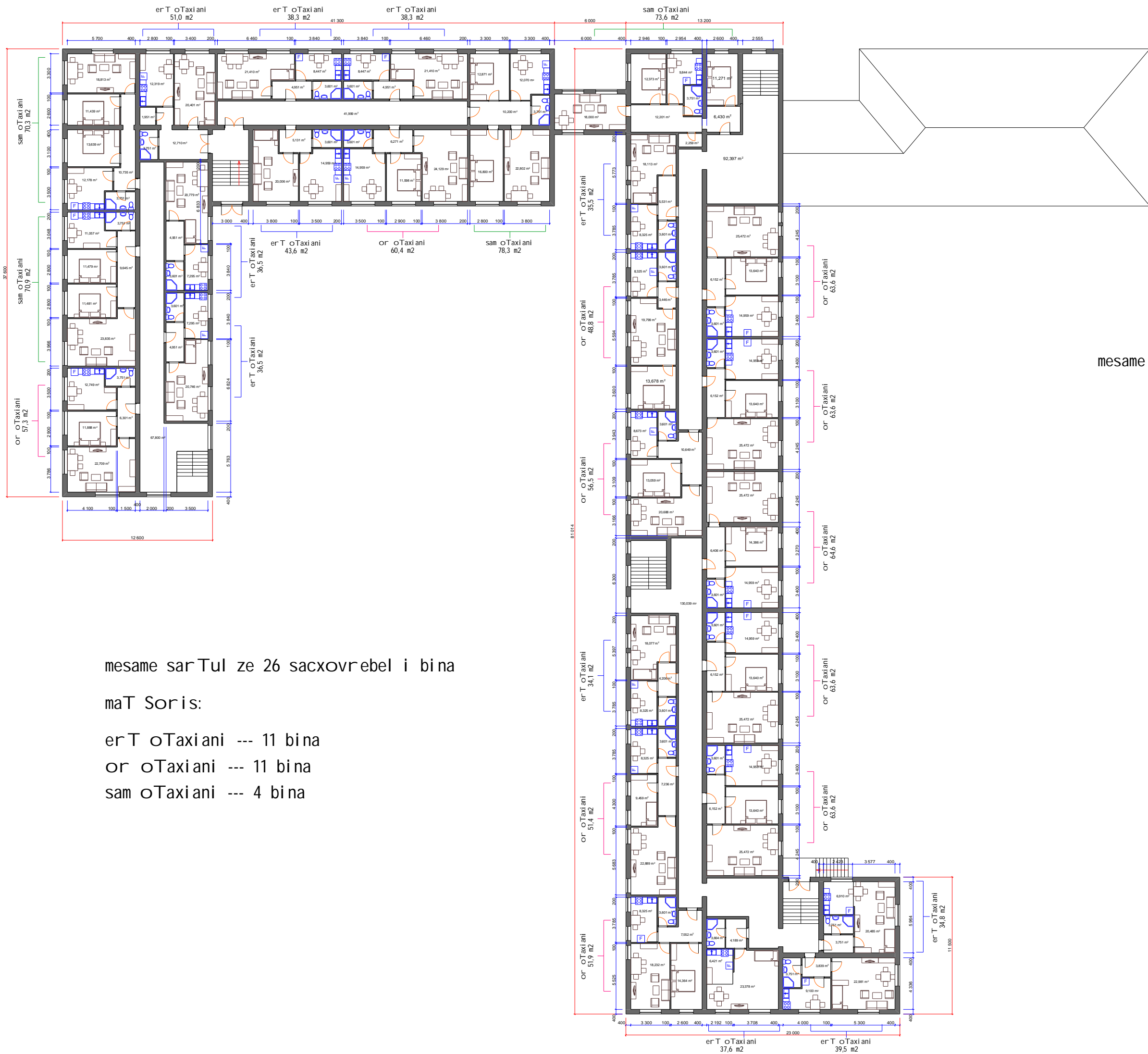


pirvel i sarTul is gegma

pirvel sarTul ze 31 sacxovrebel i bina
 maT Soris:
 erT oTaxiani --- 12 bina
 or oTaxiani --- 16 bina
 sam oTaxiani --- 3 bina

**korpusSi sul 88 sacxovrebel i bina
 maT Soris:
 erT oTaxiani --- 35 bina
 or oTaxiani --- 42 bina
 sam oTaxiani --- 11 bina**

Tanandeboba dir'ektori arqi teqtori d'eban'Shva Seamovna	gvartl b. d'ebuaZe e. oSefal'Svili e. oSefal'Svili z.asi ani ka'Svili	Tariri xel mowera	stadia furcel i Formati eskiZi masStabi 1 : 300	q. xa'Sur i. saakazi's quCa #2 mdebare (yofli i saavadyofo) Senobis rekonstruqcia sacxovrebel korpusad pirvel i sarTul is gegma	a - 1 „b.d. j gurfi „	A 3
--	---	-------------------	--	--	--------------------------	-----



mesame sarTul is gegma

mesame sarTul ze 26 sacxovrebel i bina
 maT Soris:
 erT oTaxiani --- 11 bina
 or oTaxiani --- 11 bina
 sam oTaxiani --- 4 bina

Tanamdeboba	garri	Tariri xel mowera	stadia	furcel i Formati
difetori	b. dgebuze		eskizi	a - 3
arqi teqtori	e. osefaiSwili		masStabi	"b.d. j gurfi."
dbamuSava	e. osefaiSwili		1 : 300	
Scamowma	z.asi anikaSwili			

q. xaSur i. saakazis quCa# 2 mdebare
 (yofili i saavadmyofo) Senobis
 rekonstruqcia sacxovrebel kor pused
 mesame sarTul is gegma